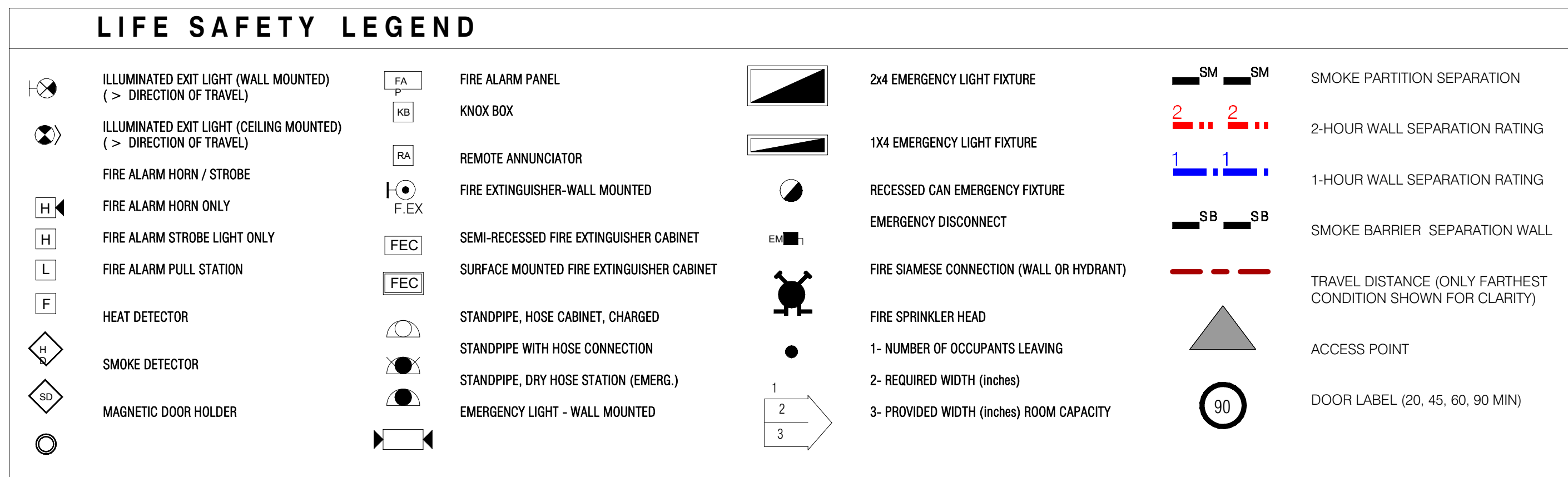


[illegible]

LIFE SAFETY GENERAL NOTES

1. ALL CONSTRUCTION SHALL COMPLY WITH THE 2020 FLORIDA BUILDING CODE WITH ALL APPLICABLE SUPPLEMENTS, 2021NFPA 101 AND THE FLORIDA FIRE PROTECTION CODE 7TH EDITION.

2. CONSTRUCTION IS CONSIDERED RESIDENTIAL WITH A COMMERCIAL MERCANTILE/ASSEMBLY COMPONENT ON THE GROUND FLOOR. REFER TO PLANS FOR OCCUPANT LOAD FACTORS FOR EACH AREA.

3. ENTIRE BUILDING SHALL BE FULLY PROTECTED BY A FIRE SPRINKLER SYSTEM. BUILDING SHALL BE CONSTRUCTED AND PROTECTED IN ACCORDANCE WITH TYPE I-B CONSTRUCTION. USE AND OCCUPANCY CLASSIFICATION R-2.

4. ASSEMBLY AREAS HAVE BEEN PROVIDED WITHIN THE BUILDING. ASSEMBLY AREAS HAVE BEEN CONSIDERED FOR THE MOST STRINGENT CONDITIONS FOR CONSTRUCTION TYPE AND USE.

5. MAXIMUM FLOOR AREA ALLOWANCES PER OCCUPANT AS PER TABLE FBC 1004.5 AND FFPFC 1011 T.3.1.2

	300 FBC	FFPFC
ACCESSORY STORAGE/ MECH BUSINESS AREAS	150 GROSS SF	500 GROSS SF
EXERCISE ROOMS/ EQUIP	50 GROSS SF	50 GROSS SF
EXERCISE ROOMS/INDECK	50 GROSS SF	15 GROSS SF
LOCKER ROOMS	50 GROSS SF	N/A
PARKING GARAGE	200 GROSS SF	N/A
MERCANTILE (STREET LEVEL)	60 GROSS SF	30 GROSS SF
RESIDENTIAL	200 GROSS SF	200 GROSS SF
POOL	50 GROSS SF	50 GROSS SF
DECK	15 GROSS SF	30 GROSS SF

5. MAXIMUM TRAVEL DISTANCE AS PER FBC 1017.2

	250 FT (SPRINKLED)
ASSEMBLY OCCUPANCY	250 FT (SPRINKLED)
BUSINESS OCCUPANCY	300 FT (SPRINKLED)
MERCANTILE	250 FT (SPRINKLED)
STORAGE/GARAGE	400 FT (SPRINKLED)

6. MAXIMUM DEAD END PER FBC 1020.4

BUSINESS OCCUPANCY	50 FT (SPRINKLED)
ASSEMBLY OCCUPANCY	20 FT (SPRINKLED)
RESIDENTIAL (R-2)	50 FT (SPRINKLED)

7. MAXIMUM COMMON PATH OF TRAVEL AS PER FBC 1006.2.1

BUSINESS OCCUPANCY	100 FT (SPRINKLED)
ASSEMBLY OCCUPANCY	75 FT (SPRINKLED)
RESIDENTIAL (R-2)	125 FT (SPRINKLED)
STORAGE	100 FT (SPRINKLED)

8. CAPACITY FACTORS AS PER FFPFC 7.3.3.1

STAIRS 0.3 IN. / OCCUPANT

LEVEL COMPONENTS 0.2 IN. / OCCUPANT

9. MINIMUM DOOR WIDTH = 32 IN.

11. REFER TO LIFE SAFETY PLANS FOR SPECIFIC SAFETY ITEMS REQUIRED.

12. PROVIDE AN "IN BUILDING PUBLIC SAFETY RADIO ENHANCEMENT SYSTEM" IN ACCORDANCE WITH FFPFC 1.11.1.10.

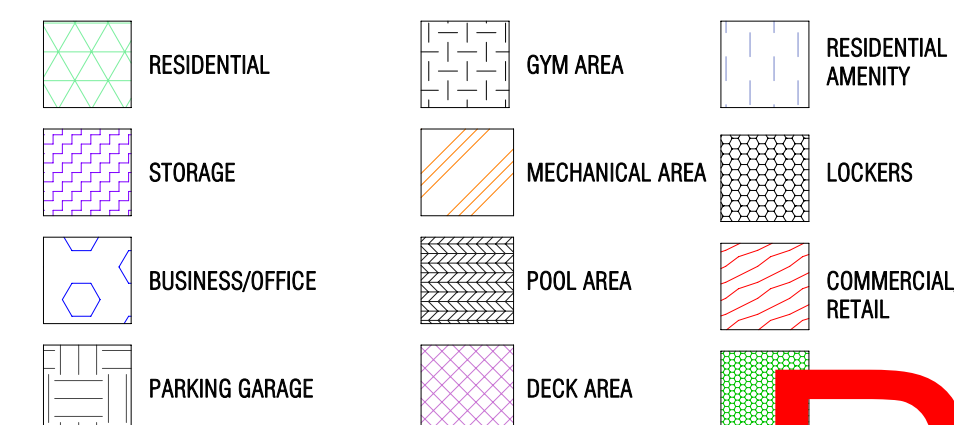
KEYED NOTES

- | | |
|---|---|
| 1 | FIRE APPARATUS SET UP SITE |
| 2 | MAIN FIRE ALARM PANEL (SEE ELECTRICAL DWGS.) |
| 3 | SIAMESE CONNECTION (SEE CIVIL DWGS.) |
| 4 | FIRE ALARM SYSTEM GRAPHIC ANNUNCIATOR |
| 5 | BUILDING EXIT |
| 6 | FILE LINE BACK FLOW PREVENTER (DCV) |
| 7 | FIRE SPRINKLER LINE (SEE CIVIL & FIRE PROTECTION DWGS.) |

CODE ANALYSIS

HIGH VELOCITY HURRICANE ZONE

NEW CONSTRUCTION MUST MEET THE REQUIREMENTS FOR IMPACT RESISTANT GLAZING AND CODE REQUIRED WIND SPEEDS, THE PROJECT LOCATION IS WITHIN THE HIGH VELOCITY HURRICANE WIND ZONES AS DEFINED BY FBC CH. 2, SECTION 202



ARCHI-ONE

200 North Federal Hwy.
Pompano Beach FL



ARCHITECT:

DEFORMA STUDIO INC

5555 BISCAYNE BLVD., SUITE 2 S
MIAMI, FL. 33137
T: 305 639 2053
F: 305 639 2054
E: INFO@DEFORMASTUDIO.COM
W: WWW.DEFORMASTUDIO.COM

STRUCTURAL ENGINEER:

BCC ENGINEERING

6401 SW 87TH AVENUE SUITE 20
MIAMI, FL 33173
305.670.2350

MEP ENGINEER:

RESTEKC

18191 NW 68th AVENUE SUITE 22
MIAMI GARDENS, FL 33015
786.803.8689

CIVIL ENGINEER:

CMPLX


2140 S. DIXIE HIGHWAY, SUITE 300
MIAMI, FL 33133
PHONE: 305.297.2602

LANDSCAPE ARCHITECT:

GSI A DESIGN, INC.

GSLA DESIGN, INC.
17670 NW 78TH AVE. SUITE 214
MIAMI, FL 33015
PHONE: 305 292 1016

INTERIOR DESIGNER



OWNER / DEVELOPER:

ARCHI

ARCHI
8085 LEMON SERPENTINE LANE
DELRAY BEACH, FL 33446-2247
(305) 351-2006
WWW.ARCHI.GE

Office Registration #AA2600259

Drawn by: CAMILO DIEZ
Approved by: JAVIER BARRERA

DESCRIPTION	DATE
-------------	------

See

PROFESSIONAL C
RECORD STAMP

JAVIER R BARRERA
FLORIDA REGISTERED ARCHITECT
AR No. AR98563

DESIGN DEVELOPMENT

LIFE SAFETY
PARKING
LEVEL3

SCALE As indicated

THE DESIGNS INDICATED IN THESE DRAWINGS ARE PROPERTY OF
© deforma studio ALL COPYRIGHTS RESERVED